



MARSILING PRIMARY SCHOOL



Learn • Lead • Serve
My Pride Since 1958

2023 Curriculum Briefing (Middle Primary)

Year Head's Time



Mdm Herianti Abu Shah
Head of Department / Character and
Citizenship Education
(covering Year Head/ (Middle Primary))

8 February 2023

Introduction of Year Head



Mdm Herianti Abu Shah
HOD /Character and Citizenship
Education
(Covering YH/ (Middle Primary))



Mdm Shazana
Year Head/ (Middle Primary)

- Oversees all programmes and matters relating to the **holistic development of students** in P3 and P4.
- **Works with Form Teachers** to provide stronger **socio-emotional support** to students.
- Coordinates efforts among teachers to better ensure a **more coherent educational experience** for students.

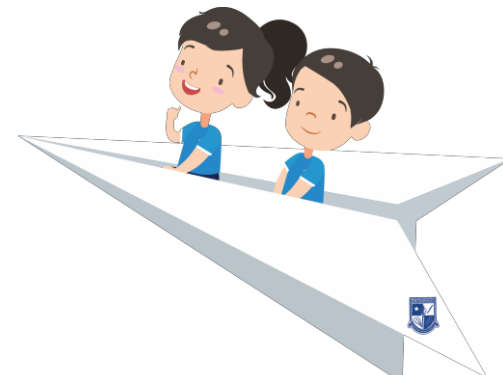


YEAR HEAD'S TIME



OVERVIEW

1. Transition from Lower Primary to Middle Primary
2. Direct School Admission (DSA-Sec)
3. Gifted Education Programme (GEP) (P3)
4. Subject-Based Banding (SBB) (P4)
5. Supporting Your Child/ School-Home Communication
6. Parent Engagement Practices
7. Growth Mindset



Transition from Lower Primary to Middle Primary



Physical

- Increased self-awareness
- More attention to own image and style

Intellectual

- Academic demands
- Higher expectations from adults that they respect

Emotional

- Prone to "Middle Child" Syndrome
- "I'm still a baby!"
- "I'm not a baby anymore!"

Social

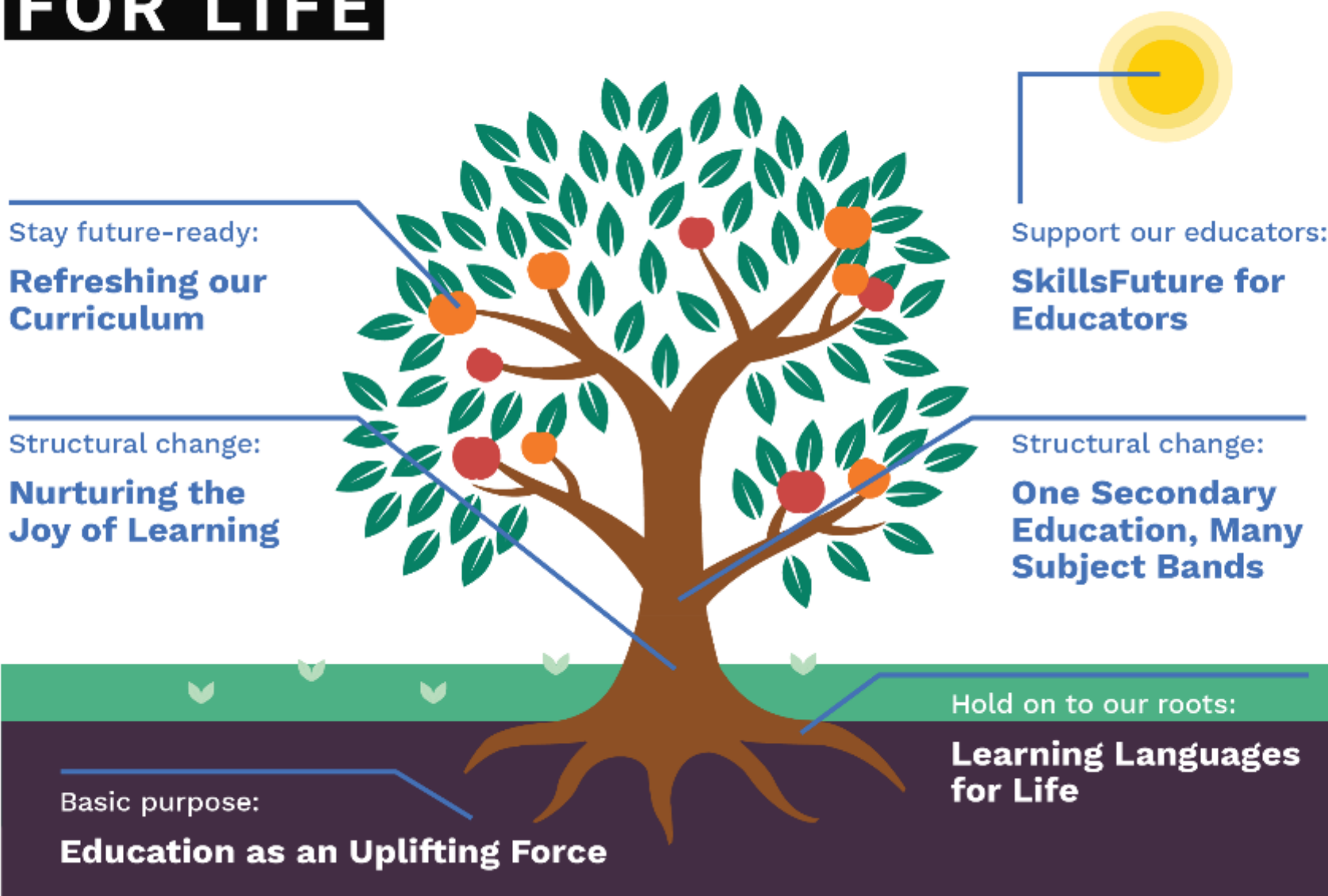
- Increased emphasis on peer relationships
- More open to influences
- Need ways to express themselves

Spiritual

- Increased need to feel sense of achievement
- Need to be resilient and to motivate oneself
- Need encouragement

ALL ABOUT **CHILDREN'S NEEDS**

LEARN FOR LIFE



LEARN FOR LIFE

“Let us prepare every child for the test of life, and not just a life of tests.”

PM Lee, National Day Rally 2012



LEARN FOR LIFE

School-based Assessment

Before 2019

From
2019

From
2020 or 2021

Adjusting School-based Assessment Structures

P1

- > No examination, but weighted assessments are conducted throughout the year

P2

- > Weighted assessments throughout the year and year-end exam

P3-P6

- > Mid-Year Exam (MYE) and year-end exam, in addition to weighted assessments throughout the year

Secondary level

- > Most schools conduct Mid-Year Exam (MYE) and year-end exam, in addition to other weighted assessments throughout the year

P1 & P2

- > Removal of all weighted assessments (including P2 year-end exam)

S1

- > Removal of Mid-Year Exam (MYE)

From P3 to S4/5

- > Schools to conduct no more than one weighted assessment per subject, per school term. This is in addition to Mid-Year Exam (MYE) and year-end exam at levels where this is applicable

P3, P5, S3

- > Removal of Mid-Year Exam (MYE)



From 2023 onwards, Mid-Year Exam (MYE) removed for ALL levels

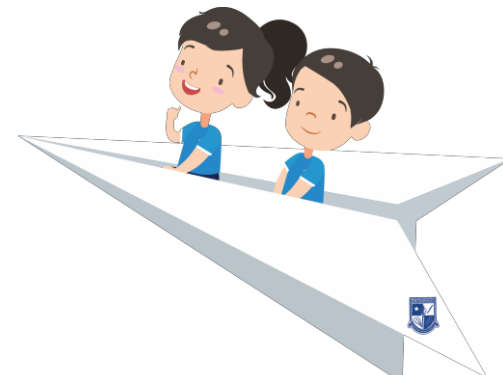


YEAR HEAD'S TIME



OVERVIEW

1. Transition from Lower Primary to Middle Primary
2. Direct School Admission (DSA-Sec)
3. Gifted Education Programme (GEP) (P3)
4. Subject-Based Banding (SBB) (P4)
5. Supporting Your Child/ School-Home Communication
6. Parent Engagement Practices
7. Growth Mindset

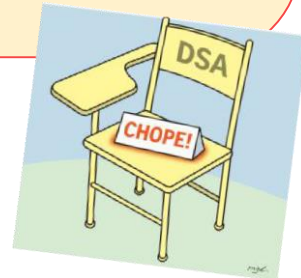


Direct School Admission (DSA-Sec)

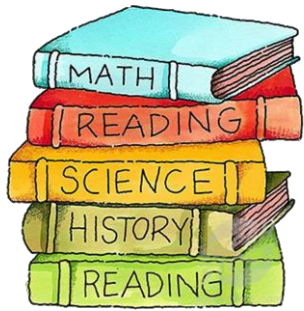
An admission exercise that allows students to enter a secondary school based on their **talent in sports, CCAs and specific academic areas**.

Students of all backgrounds can be considered for admission to some secondary schools **before** the release of PSLE results.

Participating secondary schools offer **distinctive programmes** and set their own selection criteria to admit students with **talents that can be further developed** by these programmes.



Direct School Admission (DSA-Sec)



- Understand your child's interests and strengths
- Talk to your child about his/her choice of CCAs
- Find out more about Direct School Admissions:
beta.moe.gov.sg/secondary/dsa/



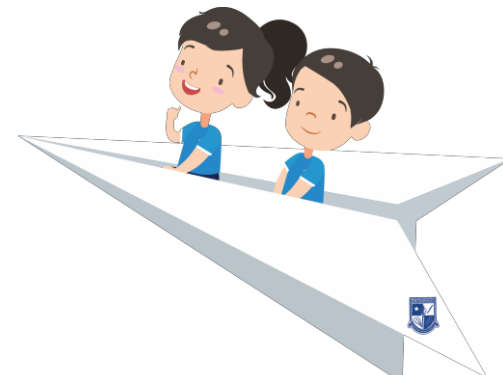


YEAR HEAD'S TIME



OVERVIEW

1. Transition from Lower Primary to Middle Primary
2. Direct School Admission (DSA-Sec)
3. Gifted Education Programme (GEP) (P3)
4. Subject-Based Banding (SBB) (P4)
5. Supporting Your Child/ School-Home Communication
6. Parent Engagement Practices
7. Growth Mindset



P3 Gifted Education Programme

The tentative schedule for the GEP Identification Exercise in 2023, is shown below:

Stage	Date	Participants
GEP Screening Exercise	17 August 2023 (Thursday)	Primary 3 pupils enrolled in government and government-aided schools
GEP Selection Exercise	17 & 18 October 2023 (Tuesday & Wednesday)	Primary 3 pupils shortlisted after the GEP Screening Exercise

P3 Gifted Education Programme

The GEP Screening and Selection Exercises will be based on the **Primary 1 to Primary 3 English Language and Mathematics syllabuses.**

Administrative details for the GEP Screening Exercise will be provided at a later date.



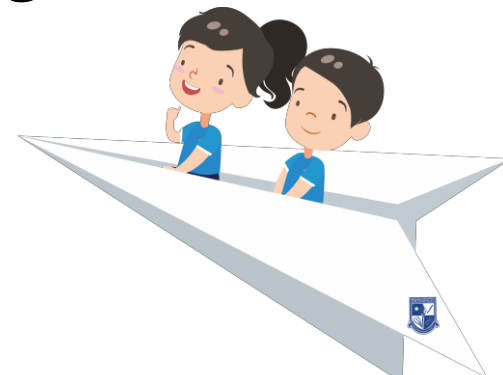


YEAR HEAD'S TIME



OVERVIEW

1. Transition from Lower Primary to Middle Primary
2. Direct School Admission (DSA-Sec)
3. Gifted Education Programme (GEP) (P3)
4. Subject-Based Banding (SBB) (P4)
5. Supporting Your Child/ School-Home Communication
6. Parent Engagement Practices
7. Growth Mindset



SUBJECT-BASED BANDING (PRIMARY)

OFFERING DIFFERENT SUBJECT COMBINATIONS



SUBJECT-BASED BANDING (PRIMARY)

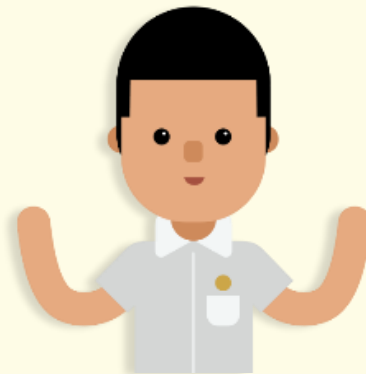
- Offers students the option of Standard and Foundation Subjects, depending on their strengths.
- Allow students to focus on and stretch their potential in the subjects they are strong in while building up the fundamentals in the subject they need more support in.
- The new PSLE scoring system will not change the considerations for deciding on a student's subject combination.



SUBJECT-BASED BANDING (PRIMARY)

- Schools will continue to recommend based on the following:
 - Student's aptitude, motivation and performance in each subject;
 - Student's ability to cope with a particular subject combination; and
 - Whether the subject combination focuses sufficiently on literacy and numeracy, and facilitates the student's articulation to secondary school and beyond.
- Offering subjects at Foundation level is **not a disadvantage to the students**. It enables them to focus on building up strong fundamentals in these subjects and better prepares them for progression to secondary school.

There will be a SBB
Briefing for all P4
parents in Sem 2



P4 Subject-Based Banding

@ PRIMARY 4

Student sits for school-based examinations

School recommends a subject combination based on the student's results.

Parents fill up an option form indicating the preferred combination.

@ PRIMARY 5

Student takes subject combination chosen by parents

English Language, Mathematics, Science and Mother Tongue Language are available at standard and foundation levels.

Higher Mother Tongue Language is also available.

School assesses student's ability to cope with the current subject combination at the end of the year. Adjustments to the number of standard and foundation subjects can be made, if necessary.

@ PRIMARY 6

Student takes subject combination decided by his school and sits for the Primary School Leaving Examination (PSLE) at the end of Primary 6.

P4 Subject-Based Banding

If your child (for P4 exam)	Your child may be recommended to take
Passes all 4 subjects and performs very well in Mother Tongue Language	4 standard subjects + Higher Mother Tongue Language
Passes all 4 subjects	4 standard subjects
Passes 3 subjects	4 standard subjects
Passes 2 subjects or less	4 standard subjects; or
	3 standard subjects + 1 other foundation subject; or
	2 standard subjects + 2 other foundation subjects; or
	1 standard subject + 3 other foundation subjects; or
	4 foundation subjects

P4 Subject-Based Banding

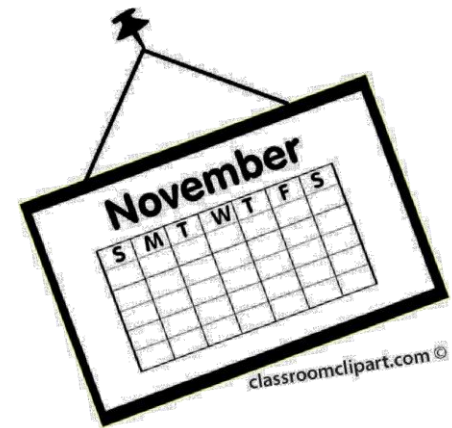
Important Dates

Wed, 8 Nov 2023 (Tentative)

Release of SBB Option Forms and Report Books to Parents

SBB Briefing and Deadline for submission of Option Forms

End-of-Year examination dates will be shared
in our termly letters.



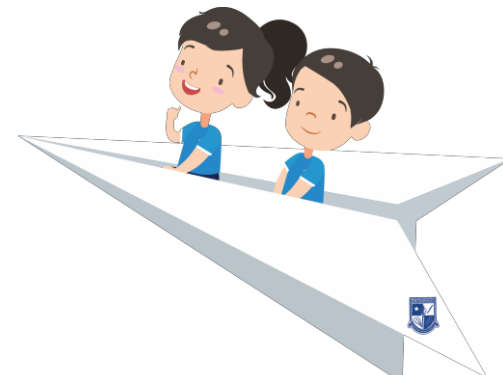


YEAR HEAD'S TIME



OVERVIEW

1. Transition from Lower Primary to Middle Primary
2. Direct School Admission (DSA-Sec)
3. Gifted Education Programme (GEP) (P3)
4. Subject-Based Banding (SBB) (P4)
5. Supporting Your Child/ School-Home Communication
6. Parent Engagement Practices
7. Growth Mindset



Supporting Your Child in Learning

Set healthy and study routines:

- Sleep early
- Eat breakfast
- Eat healthy
- Set study time
- Monitor play time



Set Goals with Your Child

Lift their Spirits

- Let your child know you are proud of them for even the smallest things, such as making a new friend, volunteering to help out with chores at home, or cleaning up after themselves independently after meals.

Every parent wants happy, healthy kids – here are 14 Ways to Boost Your Child's Mental Wellbeing!

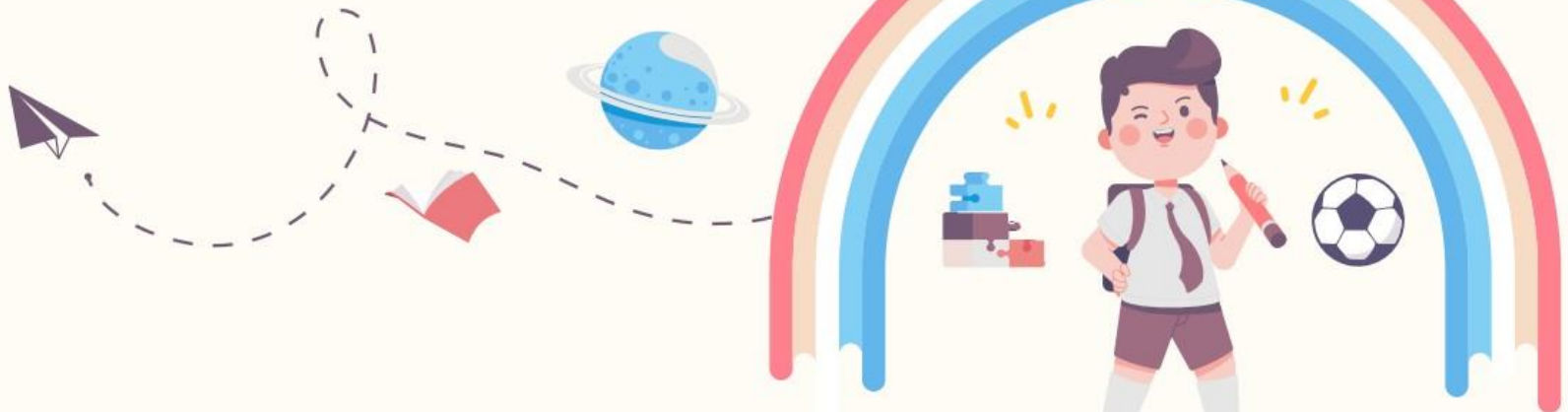
[Click Here](#) 

Encourage Exploration

- Does your child have a particular area of interest they wish to pursue? Encourage them to find out more through reading!

Sign your child up for a free library membership and myLibrary ID to enjoy NLB's e-resources.

[Click Here](#) 



School-Home Communication



- Check Student Handbook regularly



- Monitor your child's learning and communicate with the teachers via ClassDojo



- Email the teacher or school (marsilingpri@moe.edu.sg)



- Call the General Office 62696193



- Visit our school website (<http://marsilingpri.moe.edu.sg/>)



- Connect with us on Facebook
<https://www.facebook.com/marsilingpri>

Parents Gateway

- Parents Gateway is used to **update parents of the schools' programmes** for parents to **provide consent for their children to participate in school activities**
- The school has been issuing **letters and consent forms** via Parents Gateway.
- All letters and consent forms sent to parents are accompanied by **in-app notifications**.



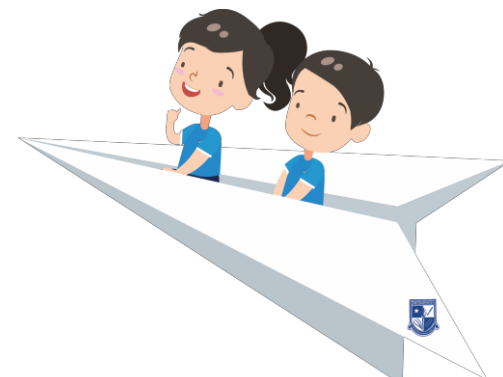


YEAR HEAD'S TIME



OVERVIEW

1. Transition from Lower Primary to Middle Primary
2. Direct School Admission (DSA-Sec)
3. Gifted Education Programme (GEP) (P3)
4. Subject-Based Banding (SBB) (P4)
5. Supporting Your Child/ School-Home Communication
6. Parent Engagement Practices
7. Growth Mindset



Spend Time Together

Strong family bonds:

Support your child's

character development

Develop social and

emotional skills

Build confidence and

resilience



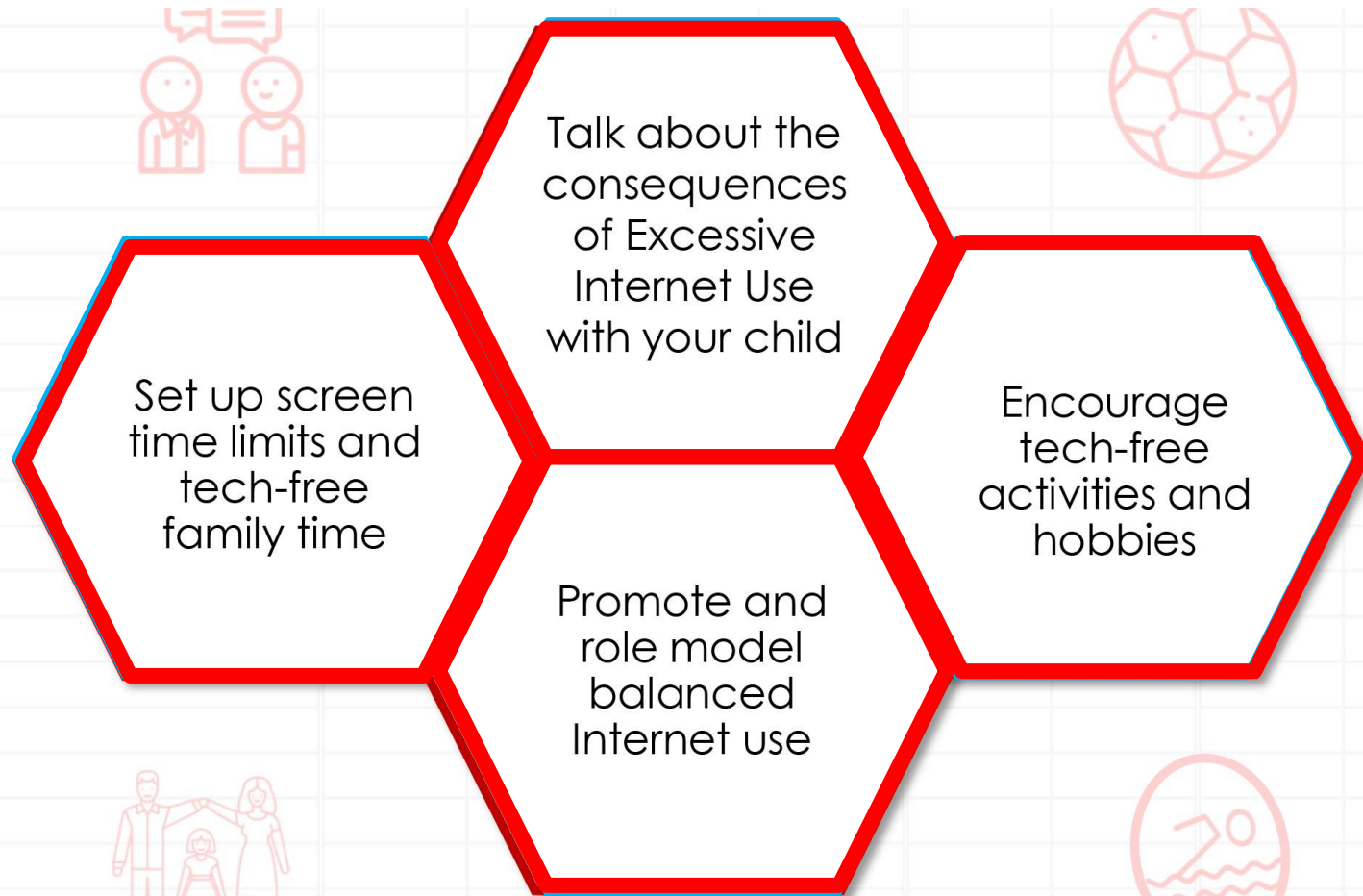
Have Regular Conversations

Try these conversation starters with your child

- What did you enjoy doing today?
- What is something new you want to try?
- What are you looking forward to in school tomorrow?
- What did you do today that you are proud of?
- What roles would you like to take on and try in school?
- What is one thing you hope to do better in school this year?



Monitor Use of Online Devices



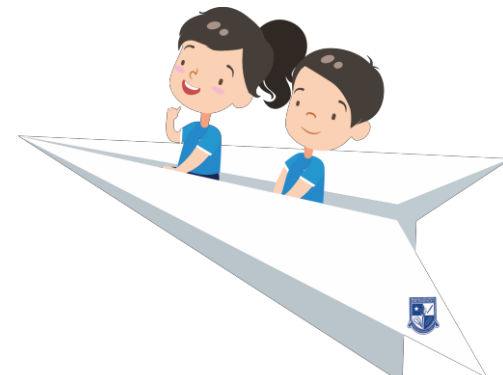


YEAR HEAD'S TIME



OVERVIEW

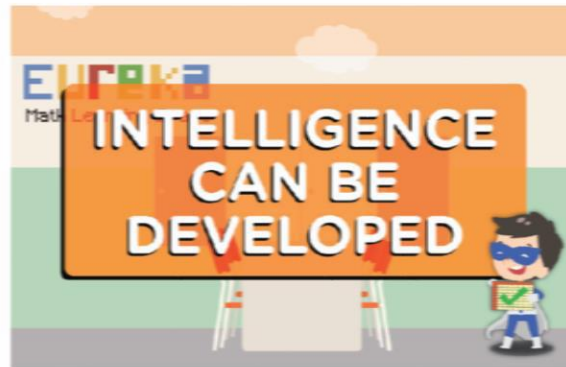
1. Transition from Lower Primary to Middle Primary
2. Direct School Admission (DSA-Sec)
3. Gifted Education Programme (GEP) (P3)
4. Subject-Based Banding (SBB) (P4)
5. Supporting Your Child/ School-Home Communication
6. Parent Engagement Practices
7. Growth Mindset



GROWTH MINDSET



The 6 GM Messages



1

Tips to Support a Smooth Transition for Your Child



Parent Kit



<https://www.moe.gov.sg/parentkit>

Guide your child to be independent

As your child moves up to the middle primary, he/she is learning to manage transitions and to be more independent.

Your child needs **encouragement and support**.
Your child needs **acknowledgement and praise**.
Your child will need to have a **Growth Mindset** to be resilient in facing the challenges ahead.

Do you know how to give praise effectively?
Do you want to know how to help your child develop a Growth Mindset?



Guide your child to be independent

Q1. Do you praise your child often?

Yes ☐ No ☐

Q2. Have you ever said these words to your child?

Full marks again?
So clever!

Wow!
You are so smart!

You are the
best!

Fail again?
So stupid.



Guide your child to be independent

Q1. Do you praise your child often?

Yes

No

When you praise effort and improvement, your child will develop a **GROWTH MINDSET**.

Q2. Have you ever said these words to your child?

Full marks again?
~~So clever!~~

That's because you
revise everyday!

Wow!

~~You are so smart!~~
Your hard work is
rewarded!

You are the
best!

You showed care to a
friend in need!

Fail again?
~~So stupid!~~

It's ok. You must
learn from mistakes
and never give up!



Working Together in Living with Covid

1. All students are to bring thermometer daily
2. Not to send your child to school if he/she is unwell and see the doctor
3. Inform the Form Teacher of the dates of your child's Covid-19 vaccination
4. Inform the Form Teacher if your child is tested ART positive



THANK YOU



Learn • Lead • Serve
My Pride Since 1958



**Let's work together –
it takes a village to raise a child**

• **Respect** • **Responsibility** • **Resilience** • **Integrity** • **Care** • **Excellence**