

2023 PSLE Results Release Day

Useful information for Parents



PSLE Results Release Day

PSLE Results 2023

Secondary 1 Posting Exercise

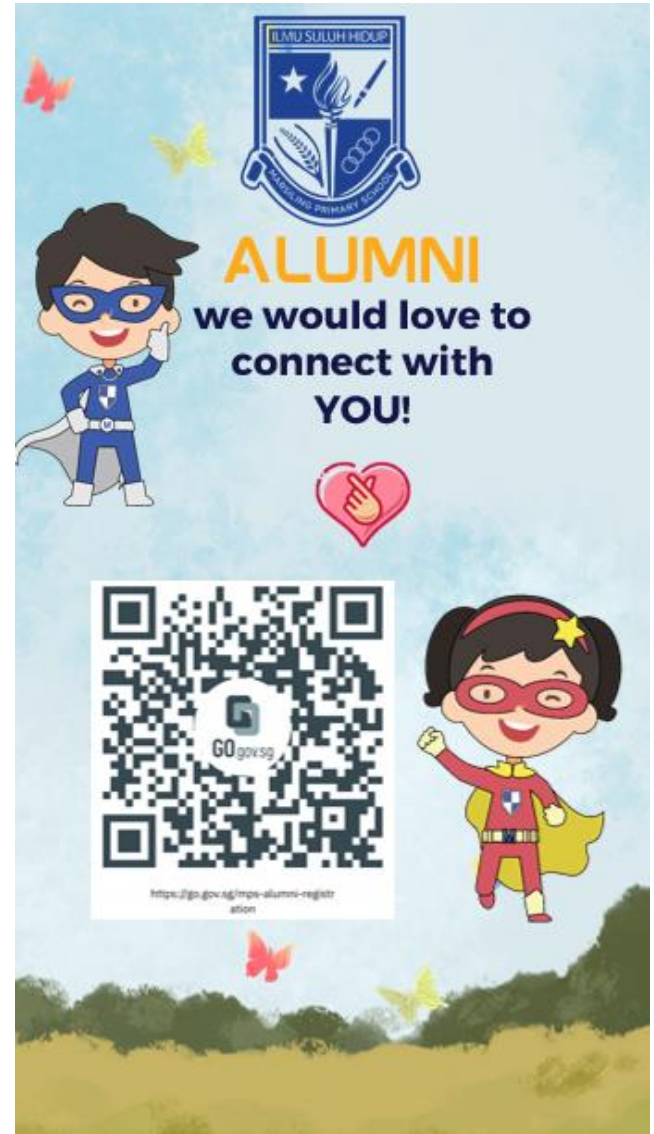
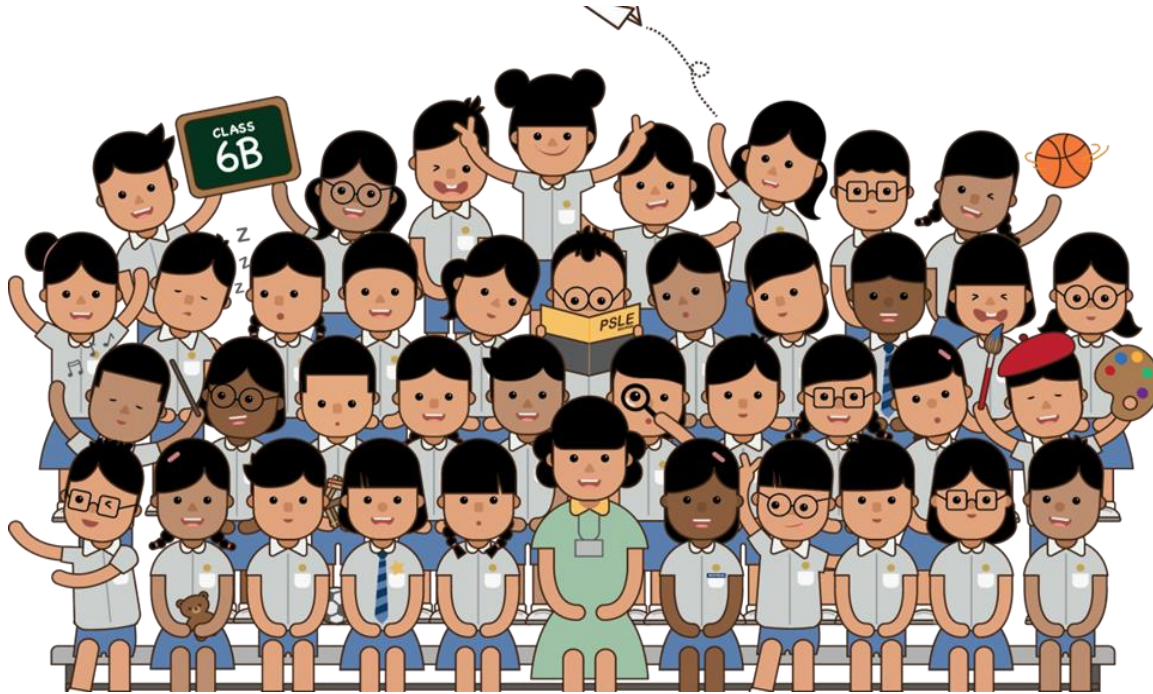
Resources & Tips for Parents

Principal's Address

Collection of PSLE Result Slip,
Certificate & S1 Option Form



PSLE Results Release Day



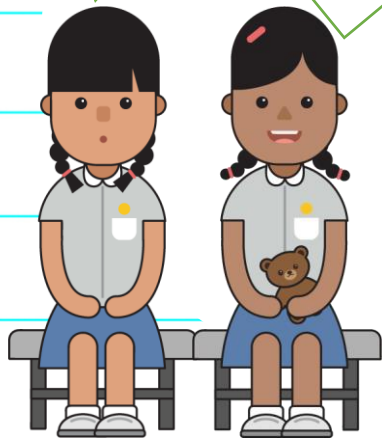
PSLE Results Release Day

Moving Forward Together

There are resources that can support you in your search for schools that best meet your needs. One example would be SchoolFinder.

What if I didn't do well?

Don't worry ! There will always be a school which can develop our interests, skills and strengths!



We can use SchoolFinder to look for information on these schools.



Explore the SchoolFinder

Look for schools based on location, CCAs and the programmes they offer. Visit the individual school website for more information.

<https://go.gov.sg/schfinder-sec>

**SCHOOL
FINDER**

Use SchoolFinder to explore schools that meet your needs.

FIND SCHOOLS



PSLE Results Release Day

Moving Forward Together

Another resource would be the MySkillsFuture Student Portal.

Our Form Teacher showed us during FTGP lessons how to use the MySkillsFuture Student Portal to look for schools with programmes that interest us... Remember?



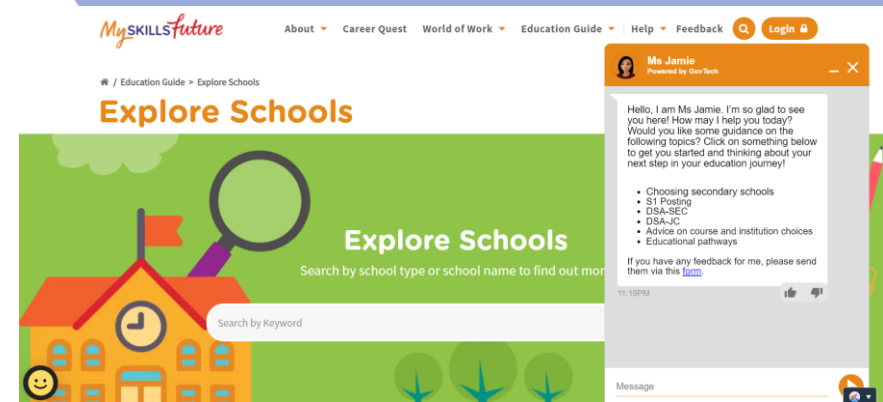
We can even use it to compare different secondary schools! Let me show you how!



Access the MySkillsFuture Student Portal

Explore schools in the *Education Guide* feature and seek advice on education choices from Ms Jamie.

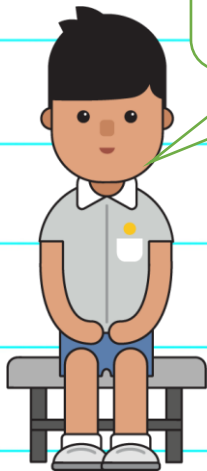
<https://go.gov.sg/exploreschools>



PSLE Results Release Day

Moving Forward Together

You can learn more about the school's culture and learning environment when you visit secondary schools' open houses.



Wow! The dates of all the schools' open houses can be found in Schoolbag!



www.schoolbag.edu.sg/story/open-house-for-secondary-schools-2023

PSLE Results Release Day

How should you submit your school choices after you receive your PSLE results?

- Use all six options so that you are more likely to get into a school of choice.
- Consider at least 2-3 schools where your PSLE Score is better than the school's previous year's Cut-Off Point.
 - Find out about secondary schools' PSLE Score ranges from the previous year via SchoolFinder or MySkillsFuture Student Portal.
- As school choice order is a tie-breaker under the S1 Posting System, you should place the schools you are most keen on as a higher choice.

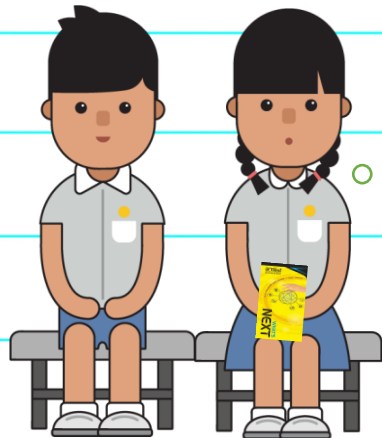
In choosing secondary schools, it is not about getting into the most popular school but the school that is best for you!



PSLE Results Release Day

Support For You and Your Friends

What's Next will also guide you on how you can choose schools that are catered to your needs, strengths and interests.



Visit What's Next – A quick guide for decision-making

<https://go.gov.sg/whats-next-psle>



Submission of S1 Options

- Eligible students will receive option forms to select secondary schools. Students should **discuss their secondary school choices** with parents.
- There are two ways to submit the option forms:
 - Online** via Secondary One Internet System (S1-IS)
 - Hardcopy** via Marsiling Primary School

Discuss secondary
school choices

Complete
Option Form

Submit online or via
MPS

ONLINE SUBMISSION

22 Nov (11.30am) to
28 Nov (3pm)

<https://go.gov.sg/submit-s1>

MPS

22 Nov (11.30am to 3pm);
23, 24, 27 and 28 Nov
(9am to 3pm)

Release of S1 Posting

Tentative Posting Results*: Between 20 and 22 Dec 2023



SMS via local mobile number



S1-IS



MPS

**The actual date of S1 posting results will be communicated via Press Release in the week of 11 Dec 2023.*

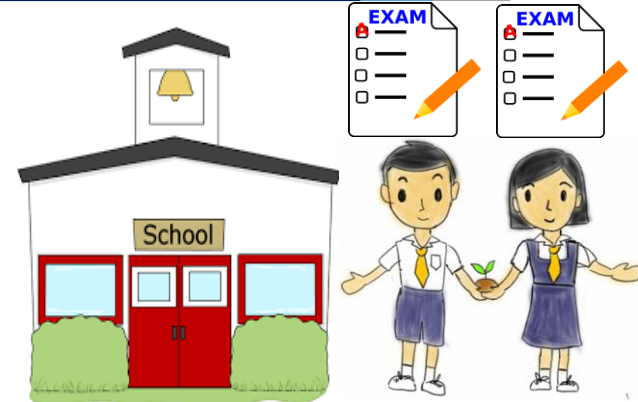
Important Dates



Submit S1
Option
by **28 Nov**
(3pm)



Check S1
Posting
20 to 22 Dec



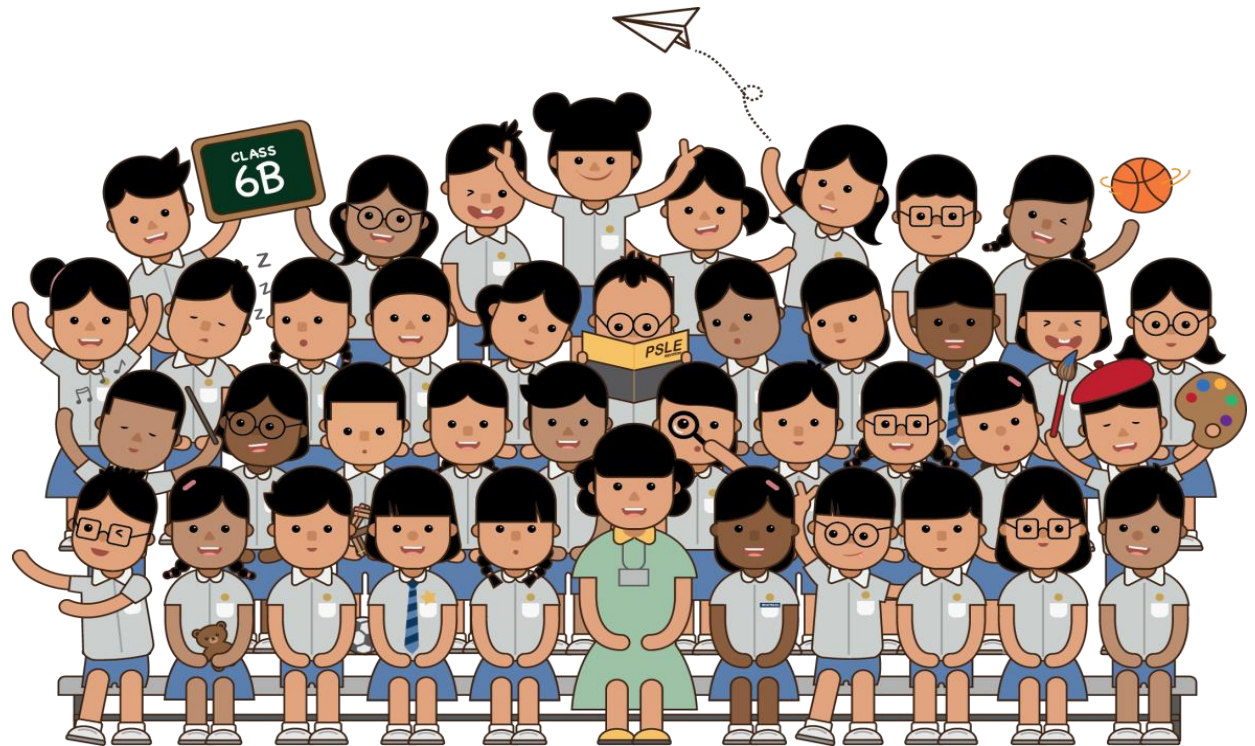
Report to Sec
School

Jan 2024

*Check the
secondary school's
website for details.*

Secondary One Posting Exercise

CHOOSING YOUR SECONDARY SCHOOL



Secondary One Posting Exercise

**The PSLE is not the destination.
It is part of your education journey.**

PSLE is part of the process of **growing and learning**.



As you await the results, there are 3 possibilities:

- (1) You are happy the results **meet your expectations**,
- (2) You are elated that your results **exceed your expectations**, or
- (3) You are worried because the results **fall short of your expectations**.

No matter where they fall under, you must remember that **your PSLE score does not determine how successful you will be in the future.**

Secondary One Posting Exercise

Managing Your Emotions and Making Your Decisions

When you receive your results, you will feel strong emotions. Managing these emotions well will allow you to **stay calm** and **make rational decisions**.



STOP

Stop what you are about to do. Count slowly from 1 to 10 while **breathing deeply**. Find a word to describe how you feel.

THINK

Think through the **different options** that are available for you. Identify trusted adults whom you can talk to for guidance and support.

DO

Approach a **trusted adult** and seek his/her help. Have a conversation with this person about what would be best for you. Make a decision and take action based on your options.

Secondary One Posting Exercise

Choosing Your Secondary Schools

The journey ahead offers a lot of **opportunities and pathways** that would best suit your **learning pace and strengths**.

Knowing your own strengths and interests will help you choose a secondary school.

Remember that the PSLE helps to assess your learning pace and needs, so that you can go to a secondary school and a **course suited to your learning needs**.



Secondary One Posting Exercise

Full Subject-Based Banding (FSBB)



Full Subject Based Banding (SBB) and subjects offered
Full SBB will provide greater flexibility to the general secondary education system, with students studying different subjects at different levels.

Find out more at go.gov.sg/pslefsbb

SBB allows you to develop to your fullest potential, especially in the subjects that you are good at!

“Do you know that FSBB will be implemented in 2024? That is next year!”



Secondary One Posting Exercise

- How can I find out more about secondary schools?
- To find out more about secondary schools and their programmes, you can do the following:



Explore the SchoolFinder

<https://go.gov.sg/schfindersec>



Access the MySkillsFuture Student Portal

<https://go.gov.sg/exploreschools>



Visit What's Next – A quick guide for decision-making

<https://go.gov.sg/whats-next-psle>



Secondary One Posting Exercise

Search and shortlist schools

SchoolFinder BETA

Explore a list of primary and secondary schools based on education level, distance and location, and what programmes they offer.

<https://go.gov.sg/explore-schoolfinder>

Secondary

Search for a school or keywords e.g. "Admiralty" or "football"

Q SEARCH

Criteria

Reset all

Location

Search for schools near you

Enter your postal code

Clear

OR

Search for schools by area

Select an area

Secondary schools

Showing 152 Secondary schools

Admiralty Secondary School

Woodlands
31 Woodlands Crescent, S737916

Ahmad Ibrahim Secondary School

Yishun
751 Yishun Avenue 7, S768928



Secondary One Posting Exercise

How you can support your child on PSLE Results' Release Day:

#1 Be present

Even if you cannot physically be with your child in school on the day itself, a short phone call before and after the results' release on how they are feeling will show that you are there for them.



#2 Celebrate effort, not results

Celebrate your child's hard work and effort, regardless of the results.

What matters is that they have given their best.

#3 Don't compare!

Don't compare your child's results with others.

Regardless of the outcome, it is important for your child to know you love them, and that their grades don't define them.



NOTE to Parents...

#1
We are here for you!

#2
We are proud of your effort and for showing resilience!

#3
Papa and Mama <3 u!

2023 PSLE Results Release Day

Mrs Heather Thio (Principal)

22 November 2023



PSLE New Scoring System – From T-score to wider scoring bands

Our PSLE scoring changes aim to:

- Reduce **fine differentiation** at a young age
- **Recognise students' level of achievement**, regardless of how their peers have done

There will be 8 Achievement Levels (ALs), with AL1 being the best.

Reflects a student's individual level of achievement

Unlike the current T-score, students' AL for each subject will **reflect their level of achievement**, rather than how they have performed relative to their peers.

AL	RAW MARK RANGE
1	≥ 90
2	85 – 89
3	80 – 84
4	75 – 79
5	65 – 74
6	45 – 64
7	20 – 44
8	< 20



S1 Posting under Full Subject Based Banding (Full SBB)

From the 2024 S1 cohort, students will be posted through Posting Groups 1, 2 and 3. The PSLE score ranges for the **three Posting Groups will be mapped from the existing N(T), N(A) and Express courses respectively.**

Posting Groups will only be used for the purposes of admitting students into secondary schools and to guide the initial subject levels students can offer at the start of S1.

S1 Posting under Full Subject Based Banding (Full SBB)

PSLE Score	Posting Groups	Indicative level for most subjects at start of S1
4 – 20	3	G3
21 and 22	2 or 3	G2 or G3
23 and 24	2	G2
25	1 or 2	G1 or G2
26 – 30 (with AL7 in EL and MA)	1	G1

With FSBB implementing from 2024, students will be in mixed form classes and sit for a common Singapore Cambridge Secondary Education Certificate (SEC) exam from 2027, regardless of their initial posting group.

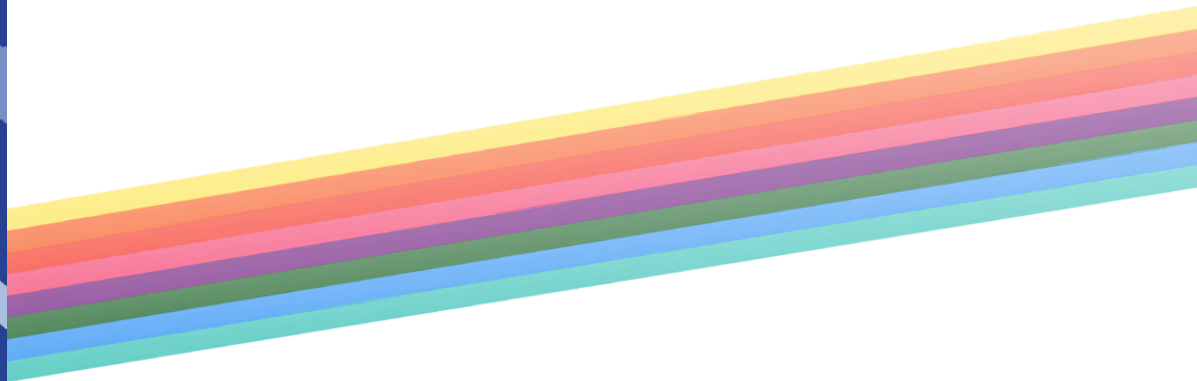
SCHOOL VALUES

RESPECT
RESPONSIBILITY
RESILIENCE
INTEGRITY
CARE
EXCELLENCE



Graduation with Gratitude

GRAD-TITUTE.



Thank You

#teamMPS

