



Shanghai School Uniforms Pte Ltd

63 Ubi Ave 1

#04-09 63@Ubi

Singapore 408937

Tel: 6352 2741 Fax: 6842 2741

Email: contact@shanghai-uniforms.com

Co. / GST Reg.: 200512781C

10 November 2025

Dear Parents and Students,

Re : Introducing Shanghai School Uniforms Pte Ltd

Shanghai School Uniforms is pleased to be in touch with all of you as the official uniform vendor for Marsiling Primary School. We take this opportunity to welcome you and give you a brief introduction about ourselves.

Shanghai School Uniforms has been supplying school uniforms to Singapore schools for over 50 years and is currently one of the leading players in the school uniform business in the nation. Central to our business are our **Product** and **Service QUALITY**.

Uniform Sales

For the coming year-end, uniform sales will be made available for purchase at:

1. In school (Please refer to the next page for the sales dates / location)
2. Ubi Retail Outlet: 63 Ubi Ave 1, #04-09 (63 @ Ubi). Walk-ins are strictly by appointment only.
3. Online Shop @ www.shanghai-uniforms.sg/ (Delivery charge will be \$10 per trip for orders below 10kg)

You are strongly encouraged to purchase your child's uniform from the **school sales counter or online shop** to prevent overcrowding at our retail outlet.

Reminder to Bring Your Own Bags

As part of our ongoing efforts to support sustainability, since January 2024, we have stopped providing plastic bags for uniforms sales. Should a bag be needed, a small charge of 10 cents per bag will apply.

We warmly encourage you to bring your own reusable bags when purchasing uniforms. Your support in this initiative is greatly appreciated as we strive to reduce waste and care for our environment.

For retail outlet purchase, FAS & exchange

Please visit our **website** <http://www.shanghai-uniforms.sg/> to book a time slot prior to visiting our retail outlet. Upon your successful booking of a time slot, you may proceed to our retail outlet at your allotted timing. Do note that your entry will not be permitted should you arrive outside of your allotted time slot. Time slot can be booked 2 weeks in advance.

Please refer to the attachment for our location and operating hours during the months of November and December.

For existing students of the school, we strongly encourage students and parents to purchase their uniform from the school sales counter or online shop before **15 Dec 2025**. Our retail outlet will be closed for walk-in purchase from **18 to 25 Dec 2025** to help reduce the overcrowding situation. During this period, our retail outlet is strictly open for exchanges and FAS collection ONLY.

To ensure the hygiene and well-being of the students, we do not permit trying of uniform sample. Exchanges for items of the same category and colour are allowed within 30 days, provided the original receipt and packaging are presented. All items sold are non-refundable.
(Exchange policy applies.)

During the school term, parents can purchase their school uniforms from the school bookshop in school.

Do feel free to contact us if you need any further clarification on our sales. We appreciate your valuable feedback and look forward to serving you to the best of our ability.

Thank you for your kind attention.

Yours sincerely,



Doris Yeo
Managing Director

Recommended Buy For P1 :

2pcs Shirt / Blouse, 2 pcs Uniform Bermuda / Pinafore, 2pcs Polo, 2pcs PE shorts, 2 pairs of socks, 1 pair of shoes (White)

Retail Outlet Location



Operating Hours (Walk-ins are STRICTLY by online appointment booking ONLY.)

Monday – Saturday: 10.00am - 6.00pm, Lunch Time: 1.00pm - 2.00pm

Location : 63, Ubi Ave 1, #04-09, 63 @ Ubi (formerly Boustead House) Singapore 408937

Tel : 6747 8037 Monday – Saturday: 10.00am – 1.00pm, 2.00pm – 6.00pm

Closed on: Sunday, Public Holidays and 18 to 25 Dec 2025

How to get there

Within 10 minutes walk from Macpherson MRT station, B exit (Circle & Downtown Line)

Bus Stops : Within 10 minutes walk from all bus stops

Ubi Rd 1, Opp Meiban Industrial Building Bus No: 63, 63M, 137

Bus Stop No. B71229

Ubi Rd 1, Meiban Industrial Building Bus No: 63, 63A, 63M, 137

Bus Stop No. B71221

Ubi Ave 2, Aztech Building Bus No: 8, 22, 61, 63, 63A, 63M, 65, 66, 137

Bus Stop No. B71169

Ubi Ave 2, Blk 3019 Bus No: 8, 22, 61, 63, 63M, 65, 66, 137

Bus Stop No. B71161

Paya Lebar Rd, Macpherson Stn Exit B Bus No: 24, 28, 43, 43e, 70, 70A, 70M, 76, 80, 80A, 135, 137, 154

Bus Stop No. B70259

Paya Lebar Rd, Macpherson Stn Exit C Bus No: 24, 28, 43, 43e, 70, 70M, 76, 80, 135, 154

Bus Stop No. B70251

SCHOOL UNIFORMS

2025 Year End and 2026 Jan Sales Dates (MPS)

Month	Date	Time	Location
Nov	*Primary 1 Sales 27, 28	9am – 3pm	Canteen
Dec	*All Level Sales 1, 2, 3, 15, 16, 17, 22, 23, 26		
Dec (FAS COLLECTION ONLY) * Financial Assistance Scheme	For FAS COLLECTION ONLY 8 – Primary 1 9 – Primary 2 10 – Primary 3 & 4 11 – Primary 5 12 – Primary 6		
Jan 2026	*All Level Sales 5, 6, 7	2pm – 4.30pm	

You may also purchase your uniforms via our Online Shop www.shanghai-uniforms.sg/
 You are strongly encouraged to purchase your uniform online before **15 Dec 2025** to ensure that you receive your uniform before school reopens.

Please bring your own bag for uniform purchases, should a bag be needed, 10 cents per bag will apply.

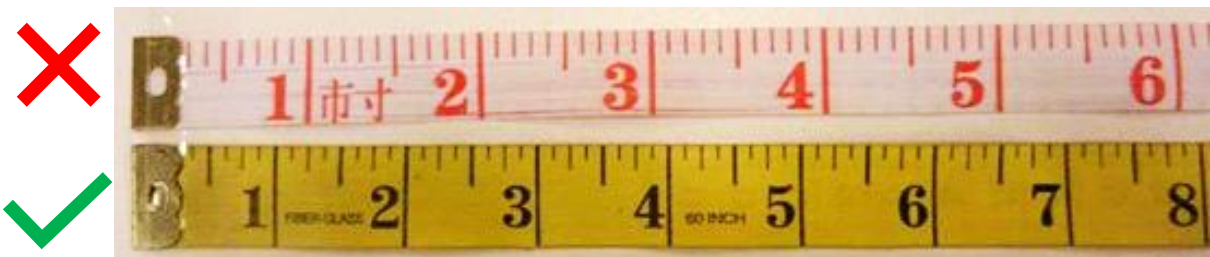
SIZING GUIDE

USING THE RIGHT MEASURING TAPE

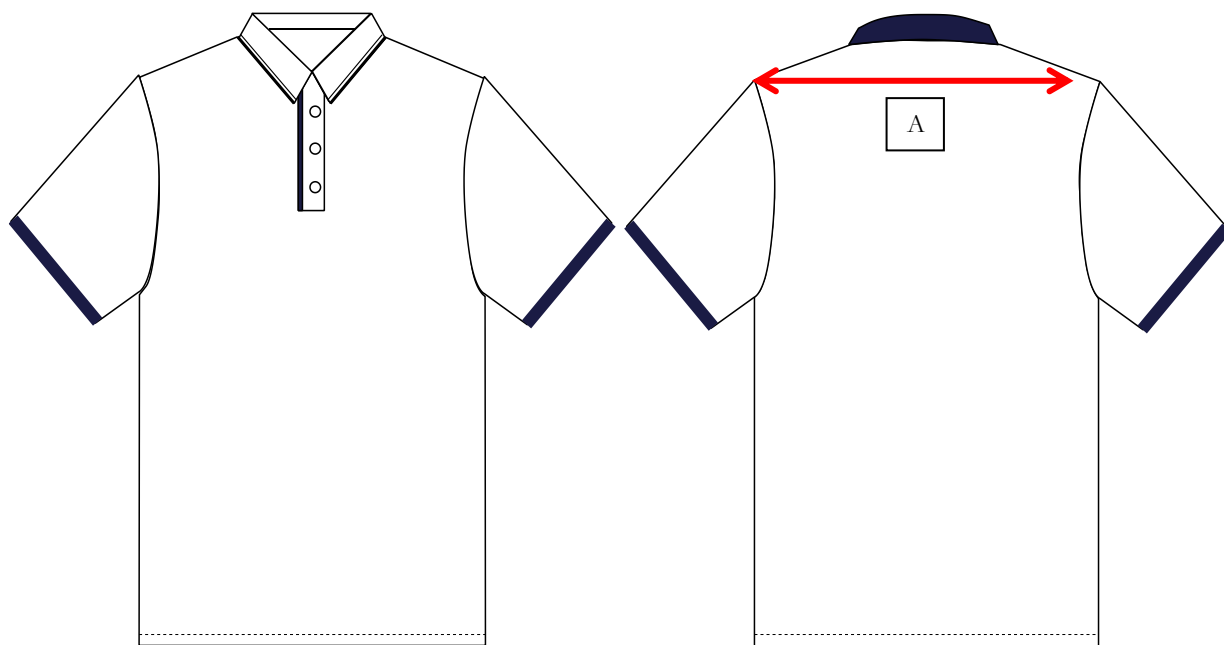
Dear Parents,

When measuring your child's uniform, it is important to use a measuring tape that adheres to the international standard for inches. The international standard defines an inch as exactly 2.54 centimetres. (1 inch = 2.54cm)

PLEASE **DO NOT USE** THE MEASURING TAPE THAT SHOWS CHINESE 寸(cùn) UNIT OF LENGTH (1 inch = ~ 3.33cm)



SIZING GUIDE



Shirt / Blouse - Measurement from **shoulder to shoulder** in inch.

Size		11	12	13	14	15	16	17	18	19	20	21
Shoulder Width	A	11"	12"	13"	14"	15"	16"	17"	18"	19"	20"	21"

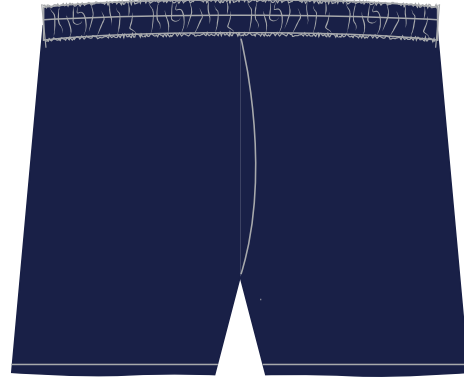
Tip: **Measure from the tip of each end of the shoulder bone.** However, if your child is fleshly, it is best to add 1 inch extra to accommodate. If the child is extremely skinny, minus 1 inch from the final measurement to avoid the clothing looking too baggy for the child.

Polo / T-shirt - Measurement from **shoulder to shoulder** in inch.

Size		26	28	30	32	34	36	38	40	42	44	46
Shoulder Width	A	11"	12"	13"	14"	15"	16"	17"	18"	19"	20"	21"

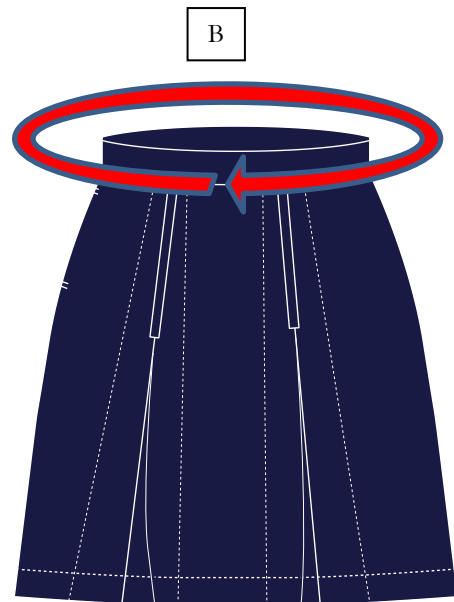
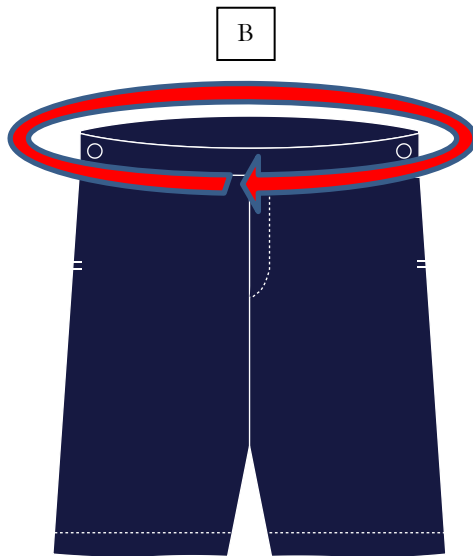
Tip: **Use $(A \times 2) + 4$ for the recommended Polo or T-shirt size.**

SIZING GUIDE



PE Shorts

Size	26	28	30	32	34	36	38	40	42	44	46
Tip: PE Shorts sizing is different from shorts / skirt / skorts sizes. As a rule of thumb, follow the size of your child's Polo / T-shirt. If your child is fleshly at the butt, add 1 size up; For very skinny build, minus 1 size down.											



Long pants / Shorts / Skirt / Skorts - Measurement of **waist circumference** in inch.

Size		20	22	24	26	28	30	32	34	36	38	40
Waist Circumference	B	20"	22"	24"	26"	28"	30"	32"	34"	36"	38"	40"

Tip: Measure the circumference of the waist where your child normally rests the waist band on the body. Do not cheat by wrapping the measuring tape tightly against the body or by breathing out to contract the stomach. Belt loop, adjustable side buttons and half elastic band bottom allows up to 2-inch adjustment. Thus, a size 30 bottom, with a waist circumference of 28 inch will be able to support without dropping off.

SIZING GUIDE

Socks / Shoes – Shoe measurement based on **Euro size**.

Socks Size	S					M				L			XL
Shoes Size	29	30	31	32	33	34	35	36	37	38	39	40	41 >

Special Size Uniforms

For sizes that are not listed in the product page, you may contact us to check if a measuring session is necessary for your child at 63522741. Prices varies for Special Size Uniforms; our Merchandising team will be happy to assist you accordingly.